

YT 630/632/637/638
EQUIVALENTS OF BURGMANN M3 SERIES



Technical features

- Single seal
- Unbalanced
- Conical spring
- Uni-directional
- To DIN 24960
- Equivalent to Burgmann M3N/M32/M37/M37G

Operating limits

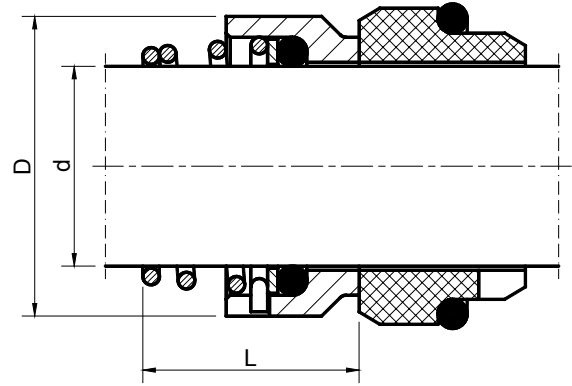
- $d_1 = 10 - 80 \text{ mm}$
- $p_1 = 1.0 \text{ MPa}$
- $t = -40 - 205 \text{ }^\circ\text{C}$
- $v_g = 10 \text{ m/s}$

Materials

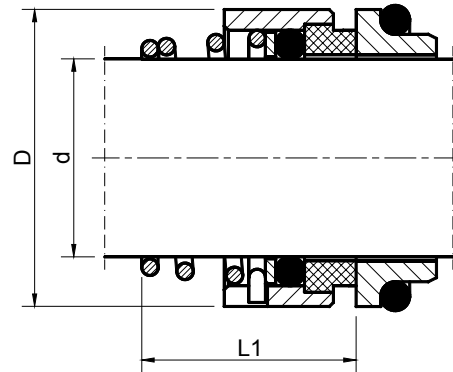
- Seal faces: Cr-Mo steel (YT630), resin-impreg. carbon graphite (YT632), silicon carbide (YT637), tungsten carbide (YT638)
- Stationary seats: silicon carbide, alumina ceramic, carbon graphite (resin-impreg.), Cr-Mo steel
- Springs, face housing: AISI 316, 316Ti
- Secondary seals: NBR, FPM, EPDM

Stationary seats

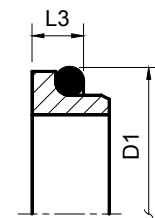
- YT630: G9, G13
- YT632: G6, G9, G4
- YT637: G6, G9, G4
- YT638: G6, G9, G4



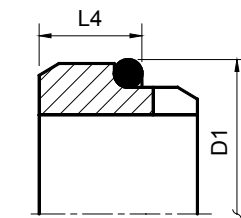
YT630: seal face with solid steel



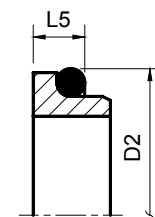
YT632: seal face with shrink-fitted carbon



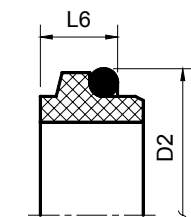
G6



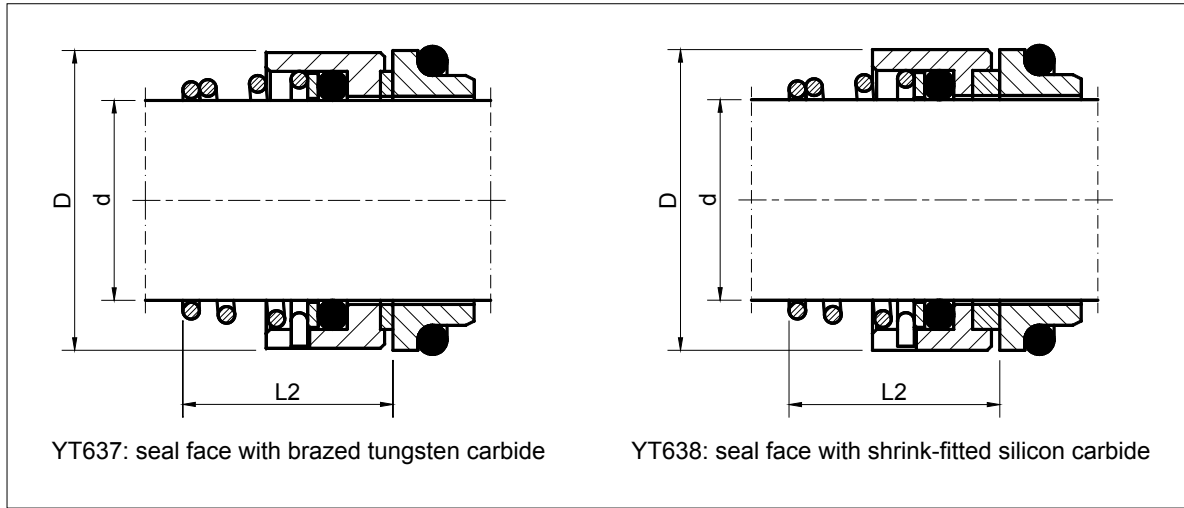
G9



G4



G13



d	D	D1	D2	L	L1	L2	L3	L4	L5	L6
10	19	21	19.2	15.5	16.9	-	6.6	10.0	6.6	7.1
12	21	23	21.6	16.0	17.4	-	6.6	10.0	5.6	7.6
14	23	25	24.6	16.5	17.4	16.5	6.6	10.0	5.6	7.6
15	24	27	24.6	18.0	17.4	16.5	6.6	10.0	6.6	8.6
16	26	27	28.0	18.0	19.5	16.5	6.6	10.0	7.5	9.0
18	29	33	30.0	19.5	20.5	18.0	7.5	11.5	8.0	10.0
20	31	35	35.0	22.0	22.0	19.0	7.5	11.5	7.5	9.5
22	33	37	35.0	21.5	23.5	20.5	7.5	11.5	7.5	9.5
24	35	39	38.0	23.5	25.0	22.0	7.5	11.5	7.5	9.5
25	36	40	38.0	26.5	26.5	23.5	7.5	11.5	7.5	9.5
28	40	43	42.0	26.5	26.5	24.5	7.5	11.5	9.0	11.0
30	43	45	45.0	26.5	25.0	24.5	7.5	11.5	10.5	11.0
32	46	48	48.0	28.5	28.5	28.0	7.5	11.5	10.5	11.0
33	47	48	50.0	28.5	28.5	28.0	7.5	11.5	11.0	11.5
35	49	50	52.0	28.5	28.5	28.0	7.5	11.5	11.0	11.5
38	53	56	55.0	33.5	32.2	31.0	9.0	14.0	10.3	11.5
40	56	58	58.0	36.0	34.7	34.0	9.0	14.0	10.8	11.5
42	59	61	60.0	37.5	37.3	35.0	9.0	14.0	12.0	14.3
43	59	61	62.0	38.5	37.3	36.0	9.0	14.0	12.0	14.3
45	61	63	64.0	39.5	39.2	36.5	9.0	14.0	11.6	14.3
48	64	66	68.4	46.0	44.7	42.0	9.0	14.0	11.6	14.3
50	66	70	69.3	45.0	45.7	43.0	9.5	15.0	11.6	14.3
53	69	73	72.3	47.0	49.0	43.0	11.0	15.0	12.3	15.3
55	71	75	75.4	49.0	49.0	47.0	11.0	15.0	13.3	15.3
58	76	78	78.4	55.0	52.0	50.0	11.0	15.0	13.3	15.3
60	78	80	80.4	55.0	3.0	51.0	11.0	15.0	13.3	15.3
65	84	85	85.4	55.0	54.3	52.0	11.0	15.0	13.0	15.3
68	88	90	91.5	55.0	55.3	52.7	11.3	18.0	13.7	16.0
70	90	92	92.0	57.0	56.3	54.0	11.3	18.0	13.0	15.3
75	98	97	99.0	62.0	56.3	54.0	11.3	18.0	14.0	15.3
80	100	105	104.0	61.8	59.3	58.0	12.0	18.2	15.0	16.3

Dimensions in mm.