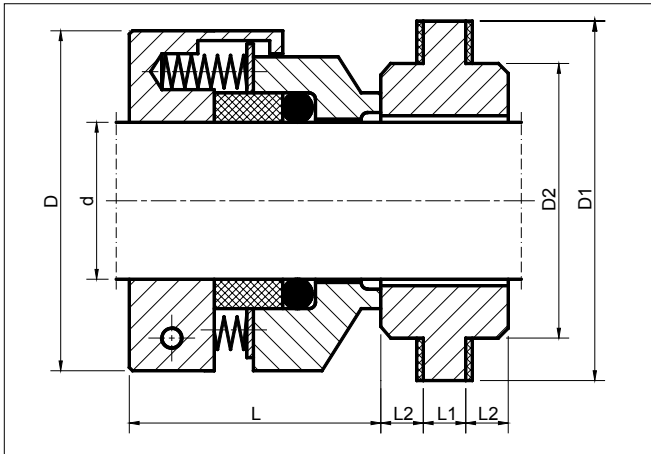


YT 466

EQUIVALENTS OF LATTY TYPE 166 A3



Technical features

- Single seal
- Balanced
- Multiple springs
- Bi-directional
- Externally mounted
- Equivalent to Latty Seal type 166 A3

Operating limits

- $d_1 = 18 - 100$ mm
- $p_1 = 1.0$ MPa
- $t = -40 - 205$ °C
- $v_g = 15$ m/s

Materials

- Seal faces: carbon graphite (resin-impreg.), silicon carbide
- Stationary seats: alumina ceramic, silicon carbide
- Springs, other metal components: AISI 304, 316, 316Ti
- Secondary seals: PTFE

d	D	D1	D2	L	L1	L2
18	44	47	36.5	38	8.0	4.8
20	46	50	39.7	38	8.0	4.8
22	48	50	39.7	38	8.0	4.8
24	50	53	42.8	38	8.0	4.8
25	52	53	42.8	38	8.0	4.8
28	55	63	50.8	38	11.0	8.0
30	58	66	54.0	38	11.0	8.0
32	60	66	54.0	38	11.0	8.0
33	60	69	57.1	38	11.0	8.0
35	62	69	57.1	38	11.0	8.0
38	65	76	63.5	38	11.0	8.0
40	68	79	66.6	38	11.0	8.0
43	70	82	69.8	38	11.0	8.0
45	72	82	69.8	42	11.0	8.0
48	75	95	79.4	42	14.3	9.5
50	78	95	79.4	42	14.3	9.5
53	80	98	82.5	42	14.3	9.5
55	80	101	85.7	42	14.3	9.5
58	83	106	88.9	42	14.3	9.5
60	86	106	88.9	42	14.3	9.5
63	90	108	92.0	42	14.3	9.5
65	93	111	95.2	42	14.3	9.5
68	98	114	98.4	42	14.3	9.5
70	98	114	98.4	42	14.3	9.5
75	105	119	103.2	42	14.3	9.5
80	109	130	114.3	42	14.3	9.5
85	114	136	120.6	42	14.3	9.5
90	120	142	127.0	42	14.3	9.5
95	125	142	127.0	42	14.3	9.5
100	130	149	133.3	42	14.3	9.5

Dimensions in mm.