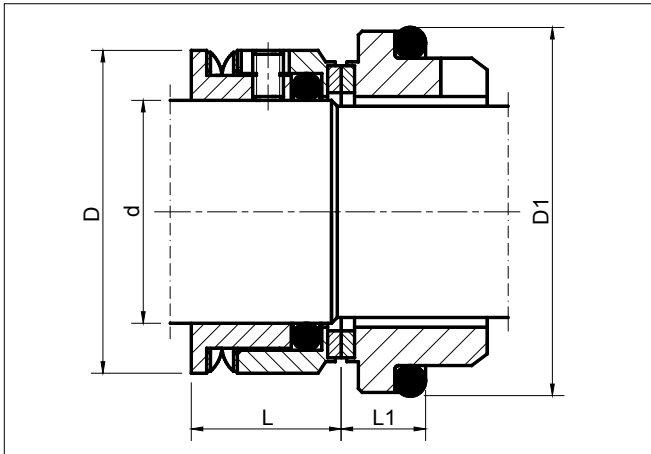


YT 307

EQUIVALENTS OF ROTEN 7K



Technical features

- Single seal
- Balanced
- Wave spring
- Bi-directional
- Short axial length
- Equivalent to ROTEN 7K

Operating limits

- $d_1 = 10 - 100 \text{ mm}$
- $p_1 = 1.2 \text{ MPa}$
- $t = -40 - 205 \text{ }^\circ\text{C}$
- $v_g = 15 \text{ m/s}$

Materials

- Seal faces: silicon carbide, tungsten carbide, Cr-Mo steel, AISI 316
- Stationary seats: silicon carbide, tungsten carbide, carbon graphite (resin-impreg.), PTFE (alumina-filled)
- Springs, collars, face housings: AISI 316, 316Ti
- Secondary seals: NBR, FPM, EPDM

d	D	D1	L	L1
10	21	18.1	18.0	5.5
12	23	20.6	18.0	5.5
14	25	23.1	18.0	6.0
15	26	26.9	19.1	7.0
16	29	26.9	19.1	7.0
18	29	30.9	19.1	8.0
20	32	30.9	19.1	8.0
22	35	35.4	19.1	8.0
24	37	35.4	19.1	8.0
25	41	38.2	19.1	8.5
28	41	43.3	19.1	9.0
30	47	43.3	19.1	9.0
32	47	43.3	19.1	9.0
33	48	53.5	19.1	11.5
35	49	53.5	19.1	11.5
38	53	60.5	21.1	11.5
40	55	60.5	21.1	11.5
43	60	60.5	21.1	11.5
45	60	65.5	21.1	11.5
48	65	65.5	21.1	11.5
50	65	72.5	21.1	11.5
55	74	72.5	22.1	11.5
60	79	79.3	25.8	11.5
65	87	84.5	25.8	11.5
70	93	89.5	25.8	11.5
75	98	94.5	25.8	11.5
80	104	99.5	25.8	11.5
85	108	105.5	25.8	13.5
90	113	111.5	25.8	13.5
95	118	116.5	25.8	13.5
100	123	119.5	25.8	13.5

Dimensions according to DIN 24960 are available pending request.

Dimensions in mm.