

## YT 250

EQUIVALENTS OF EAGLE TYPE H1



### Technical features

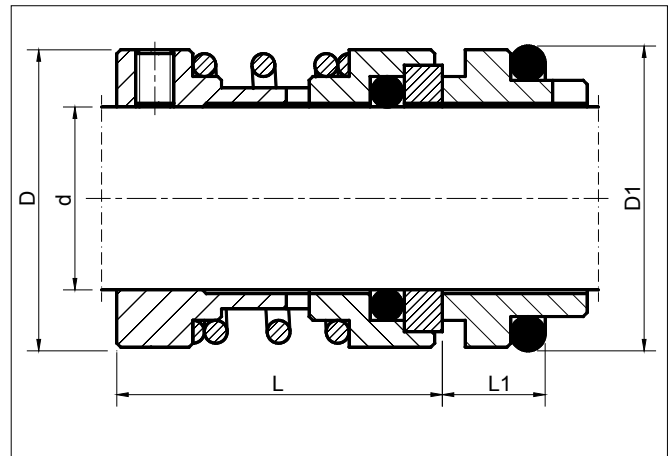
- Single seal
- Unbalanced
- Single spring
- Bi-directional
- Bayonet drive
- To DIN 24960
- Equivalent to Eagle type H1

### Operating limits

- $d_1 = 20 - 85 \text{ mm}$
- $p_1 = 1.2 \text{ MPa}$
- $t = -40 - 205 \text{ }^\circ\text{C}$
- $v_g = 20 \text{ m/s}$

### Materials

- Seal faces: silicon carbide, tungsten carbide
- Stationary seats: silicon carbide, tungsten carbide
- Springs, other metal components: AISI 316, 316Ti
- Secondary seals: NBR, FPM, EPDM



d	D	D1	L	L1
20	34	35	41	13
22	36	37	41	13
24	38	39	43	13
25	39	40	43	13
28	42	43	45	13
30	44	45	45	13
33	47	48	45	13
35	49	50	49	13
38	54	56	53	13
40	56	58	55	13
43	59	61	55	13
45	61	63	55	13
48	64	66	55	13
50	66	68	60	13
53	69	71	61	13
55	71	73	61	13
58	76	79	63	16
60	78	81	63	16
63	81	84	63	16
65	83	86	67	16
70	90	92	68	16
75	95	97	72	16
80	100	105	72	16
85	105	110	77	16

Dimensions in mm.